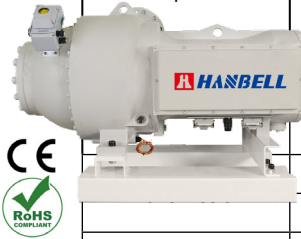




RTM-180 Magnetic Bearing Centrifugal Compressor

Specifications

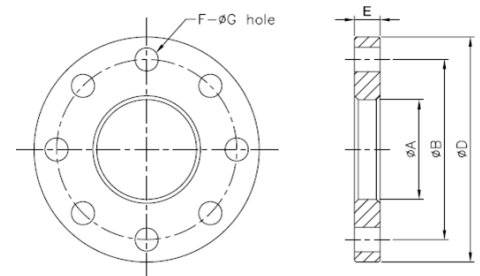


Model		RTM-180	
Refrigerant		R134a / 1234ez	
Compressor	Type	Two-stage compression	
	Max Pressure ratio	3.2	
	Nominal cooling capacity	USRT	800 900
	Rated Frequency	Hz	291.5 299.8
	Axial guide vane control	IGV	20~100% continuous
Movable Diffuser Control		NA	
Motor	Type	Direct-driven	
	Lubrication	Oil free	
	Type	3 Phase, 4 Pole, Permanent magnet motor	
	Starting	By VFD	
	Power Voltage	V	460
Insulation		Class H	
Protection		PT100*9 - Motor Winding(5) - Magnetic Bearing (4)	
Hydrostatic pressure test		PSI (kg/cm ²)	321 PSI (22 kg/cm ²)
Dimension (LxWxH) Compressor		FT/M	5.97 x 3.35' x 3.12' (1.82x1.02x0.95)
Weight (Compressor)		LB/kg	3968.321 lb (1800 kg) Compressor
Shipping Weight (Components) 1 skid		LB	

Suction/discharge/economizer flange size

Position	Size	A			B	D	E	F	G	Tube Thickness	
RTM-180	Suction	12"	327.5	320	332.8	430	480	36	16	27	>10.3
	Discharge	8"	221.5	218	223.1	305	350	30	12	25	>8.2
	EXO port	4"	116	116	118.3	185	225	24	8	23	>6

*Material- standard JIS 284.47 pounds per square inch steel unit: inches



Discharge Check Valve Size

To protect compressor from serious damage due to reverse rotation after emergency stop or shutdown, it is necessary to install the discharge check valve.

Warning: Discharge check valve is mandatory

Size	A"(mm)	B" (mm)	C" (mm)	D" (mm)
4"	100mm	2.52" (64)	6.14" (156)	4.41" (112)
6"	150mm	2.99" (76)	8.38" (213)	6.299" (160)
8"	200mm	3.50" (89)	10.512" (267)	8.27" (210)
10"	250mm	4.49" (114)	12.91" (328)	10.24" (260)

Remark *The check valve is of wafer plate valve. Use ANSI 150 standard flange

Check valve size

MCC

Model	Voltage	(kW)	Primary Side		Secondary
	(V)		Hertz	MCC(A)	MCC(A)
RTM-180	460	630	50/60	1035	1150